

Labor Market of the Silver Valley

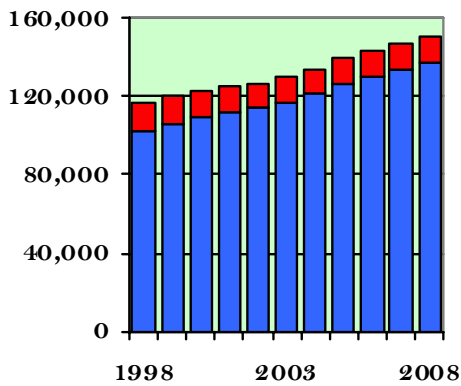


Page 2

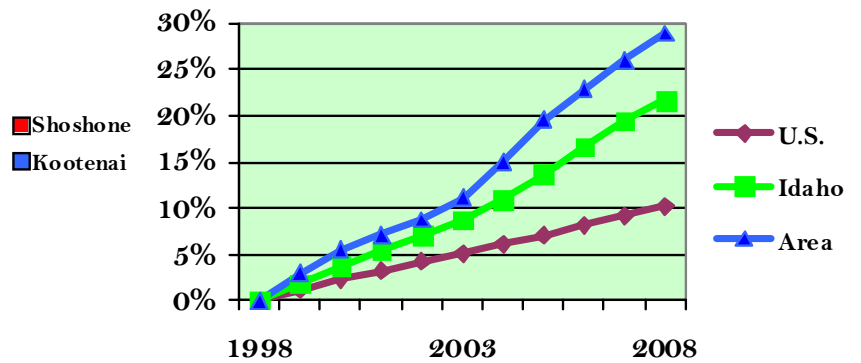
*By Kathryn Tacke, Regional Economist, Idaho Department of Labor
(208) 769-1558 ext. 3984 ~ E-Mail: ktacke@labor.idaho.gov*

From 1998 to 2008, Idaho was the fifth fastest growing state in terms of population, while the population of the Silver Valley labor market area (Shoshone and Kootenai Counties) grew faster than Idaho's. In the 1990s, 3,300 more people moved into the Silver Valley labor market area each year than moved out. The growth, especially in Shoshone County, accelerated after 2000. Today, about 3,600 people move into the area each year.

Population

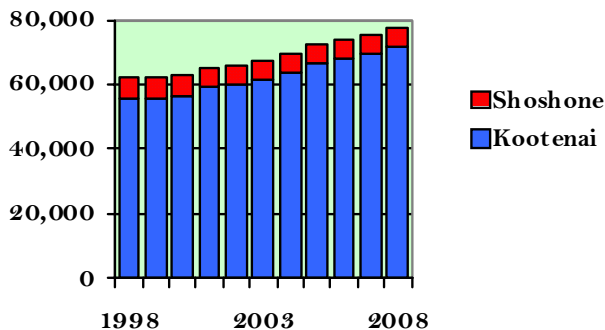


Population Growth Since 1998



Rapid population growth brings a large number of people with a wide variety of skills. Roughly half of the area's new residents join the labor force. While the U.S. labor force grew 12 percent from 1998 through 2008, Shoshone and Kootenai Counties' labor force grew 25 percent from 62,000 in 1998 to 77,200 in 2008. The population influx kept the counties' unemployment rate relatively high, despite strong job growth in Kootenai County and resurgence in Shoshone County's economy after 2002.

Labor Force



Unemployment Rate

